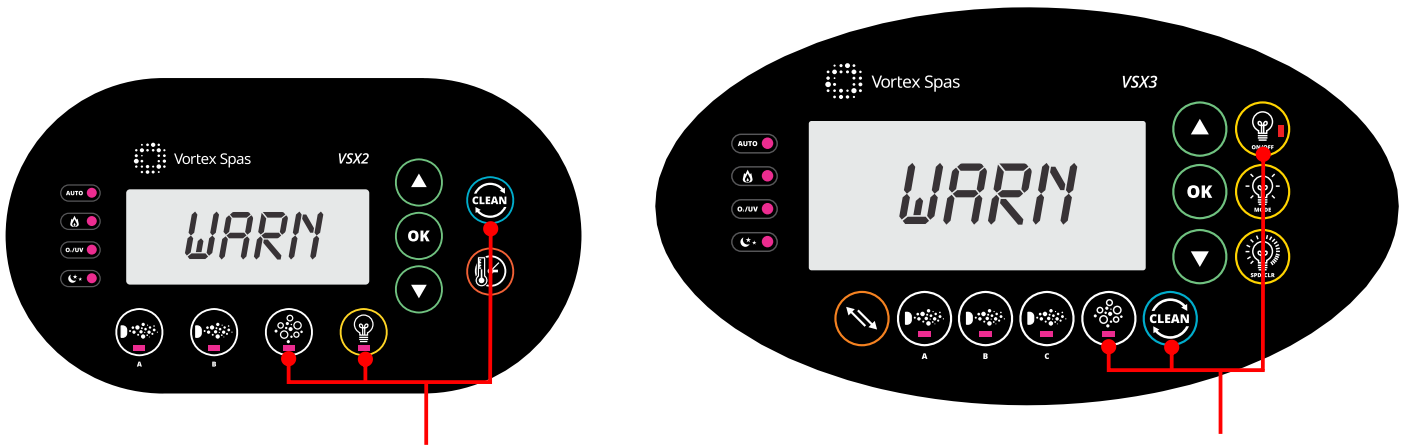


# Module Installation Instructions



## Check SV Controller Software Version

For the SpaNET SpaLink app and WiFi module to work correctly, the SV controller must be loaded with the correct firmware (software) version. All SV software versions are designated by a date code, and the SV software version can be easily checked via the SV diagnostic menu on the SV-T keypad. Prior to installing the SV SmartLINK or SmartSTREAM WiFi module the installer/user must check the SV controller software version to ensure it is up to date. If the firmware is an older version it will need to be updated prior to the WiFi module being installed.



Press & hold: **BLOWER + W.CLN + LIGHT**

## How to check software version:

- ▶ Press and hold the Blower (BLOWER icon) + W.CLN (CLEAN icon) + Light On (LIGHT icon) buttons until the display shows “WARN”
- ▶ Press the UP (UP arrow icon) button twice until display shows “S.VER” (software version)
- ▶ Press the OK (OK icon) button to activate the software version scroll

The software version will be scrolled across the display in the following format

**Vx DD MM YY**  
Version Day Month Year

For example:  
V2 29 01 14

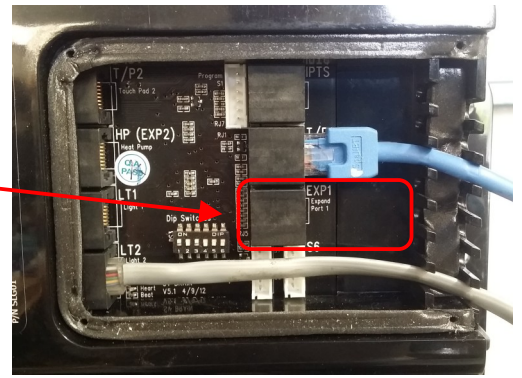
For the WiFi module and SpaLink smart device app to function correctly the software version must be **V3 28 07 14**

If the software scroll is any date earlier than V3 28 07 14 the software must be updated by a service technician prior to the WiFi module being installed

## Fitting SpaLink WiFi Module to Spa

The SpaNET SpaLink WiFi module is simple to install. It does not require any power, it just requires the black data cable to be connected to the Expand Port 1 (EXP1) socket on the top right hand corner of the SV controller.

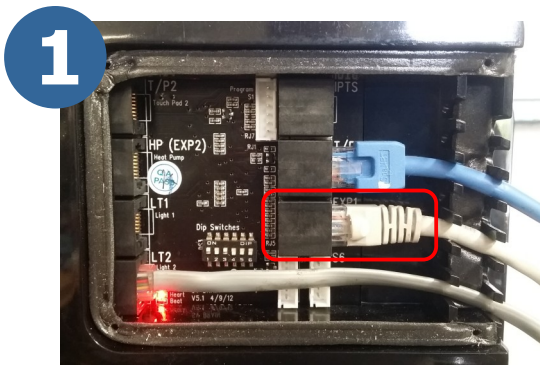
The WiFi module should be installed as close to the front of the spa cabinet as possible, ideally in a corner of the cabinet where the silver foil insulation material is minimal. The silver foil insulation can often shield the WiFi signal coming from the home router and therefore diminish the WiFi signal strength the module will receive. In some situation WiFi range extenders may need to be installed close to the spa to strengthen the WiFi signal the spa can receive, or alternatively an antenna extension cable may need to be installed on the WiFi module to enable the WiFi antenna to be mounted and installed external to the spa cabinet to improve WiFi reception.



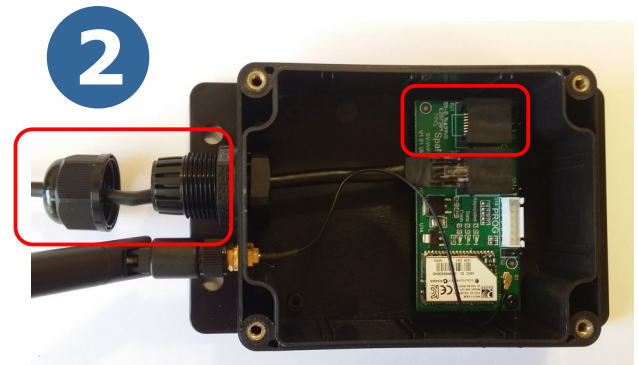
Install WiFi module in corner of spa on side closest to house

## Fitting SpaLink WiFi Module where Vortex cabinet health light is installed

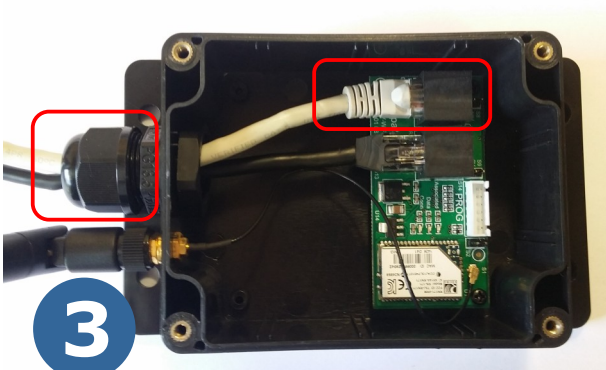
Most Vortex spas have a cabinet health light which is already connected to the EXP1 socket on the SV controller. In this situation the cabinet health light gets disconnected from the SV controller and re-connected inside of the SpaLINK or SmartSTREAM WiFi Module, therefore allowing the SpaLINK black data cable to be connected directly to the EXP1 socket on the SV controller as required.



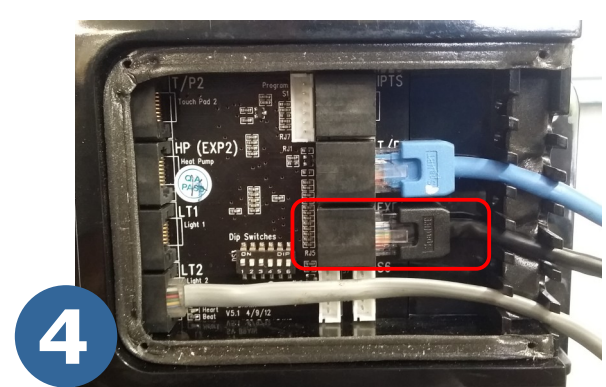
Unplug cable from EXP1 socket



Unscrew lid and cable gland ready to connect cabinet health light cable



Feed health light cable through gland, connect into spare socket labelled RJ1, tighten gland and screw lid back in place



Connect black data cable from SpaLINK module into EXP1 socket